

Assessing land thrift policies within the context of suburbanisation – An approach to enable a regional perspective

Mathias Jehling and Robert Hecht

Institute of Regional Science

Assessing land thrift policies within the context of suburbanisation – An approach to enable a regional perspective

Comparing public land policies and their changes:

- How to add a comparative spatial dimension to an analytic framework?
- How can effects of policy changes be identified in space?

Objectives

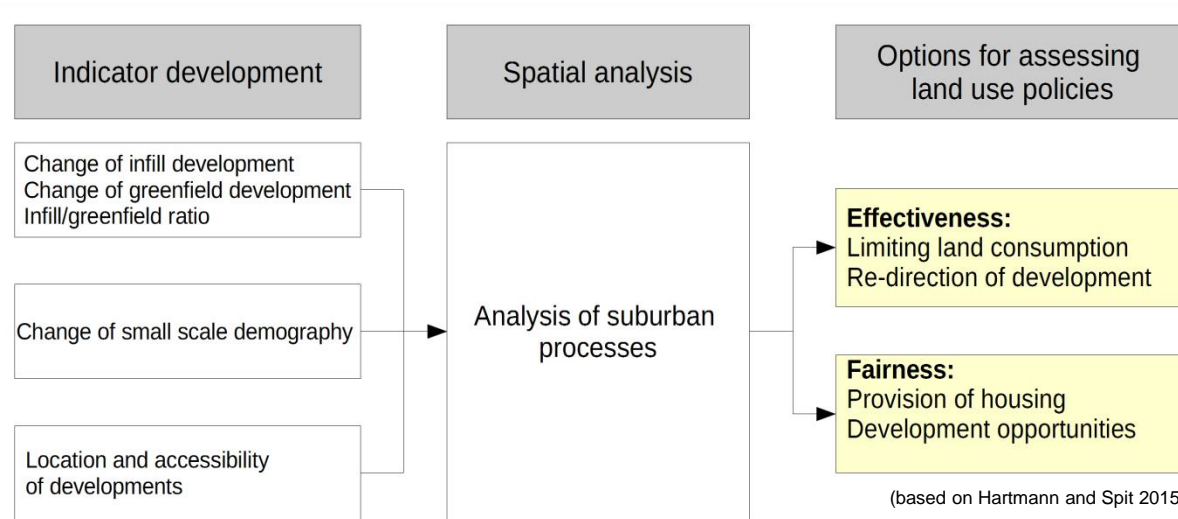


Leibniz-Institut
für ökologische
Raumentwicklung



- Germany: Turn towards land thrift policies (Henger, Bizer 2010)
- Comparative analysis of land use policies needed (Hartmann, Spit 2015)
- For an assessment, settlement structures need to be included
- Common ground: suburban land uses in a regional context (Keil, 2013)

Analytic framework – Method



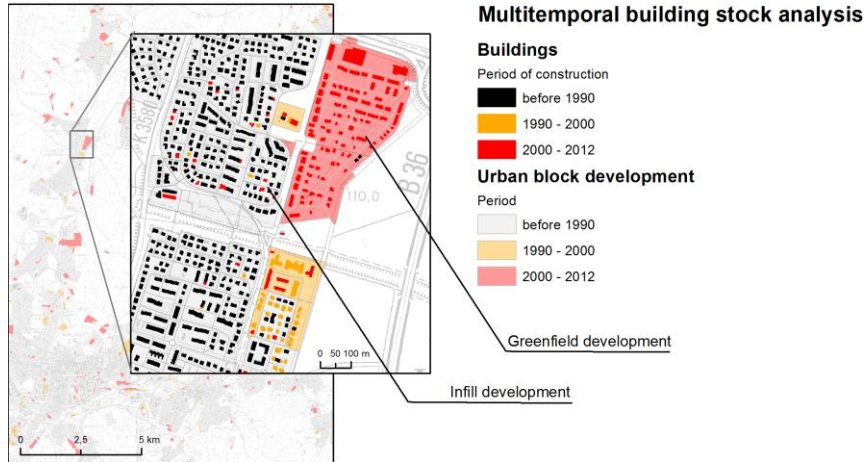
Applying it to the **city region** of Karlsruhe, GER (1992-2012)

(New) Policy objectives



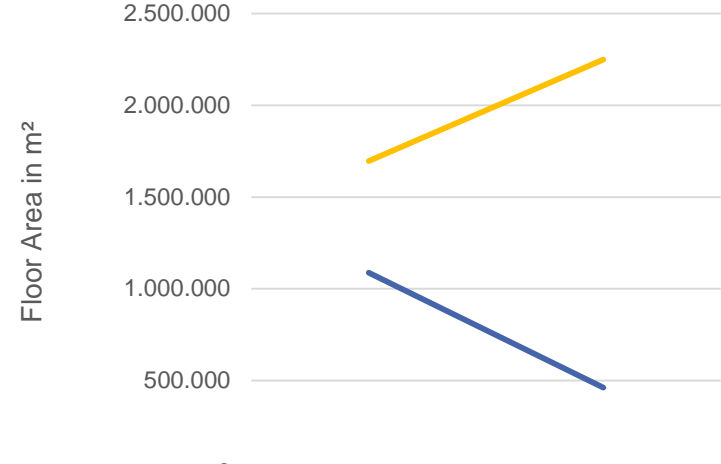
<u>Policy objective</u>	<u>Indicator</u>
Effectiveness:	
Reduction of greenfield development and 30 ha goal (§1a(2)BauGB and sustainability programme)	Changes in green field development in m ² (floor area)
Promotion of infill development	Changes in infill development in m ² (floor area)
Infill/ greenfield ratio	Share of infill development (Total change of floor area/ Total change of floor area)
Avoidance and reduction of traffic (§1(6) Nr.9 BauGB)	urban development in relation to the accessibility of a district
Fairness:	
Municipal development opportunities.	urban development in relation to accessibility of district
Affordable living space.	population change in relation to change of floor area

Promotion of infill development



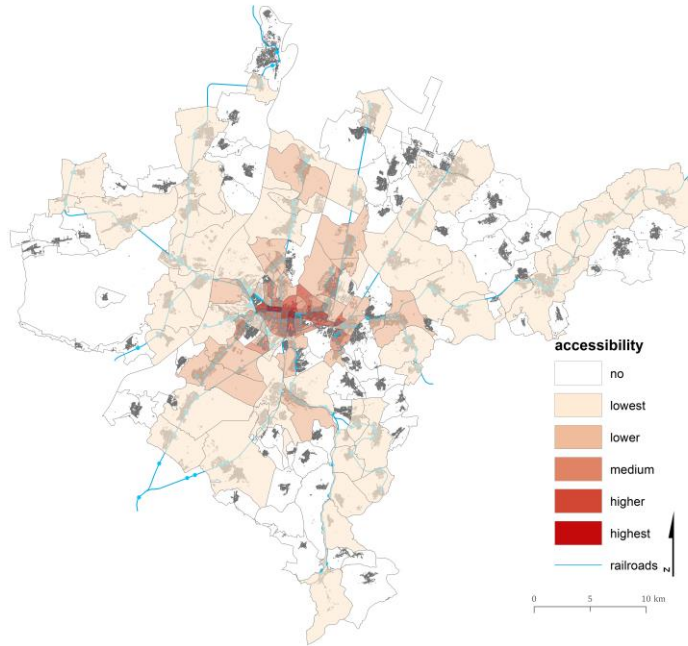
Analysing land use change through topographic maps (Meinel et al 2009)

Development of Residential Floor Area

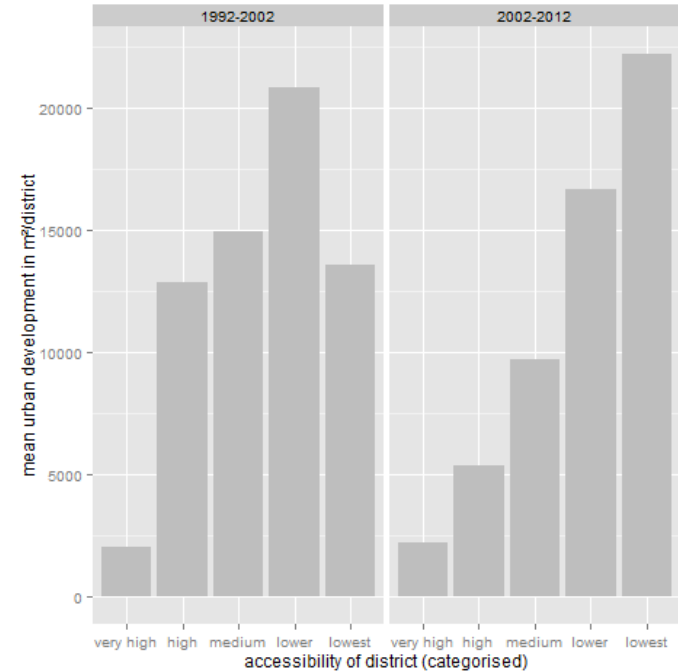


	Period 1990-2000	Period 2000-2012
Infill development	1.695.945	2.248.834
Greenfield development	1.087.944	461.879

Reduction of traffic



traffic network of a functional region



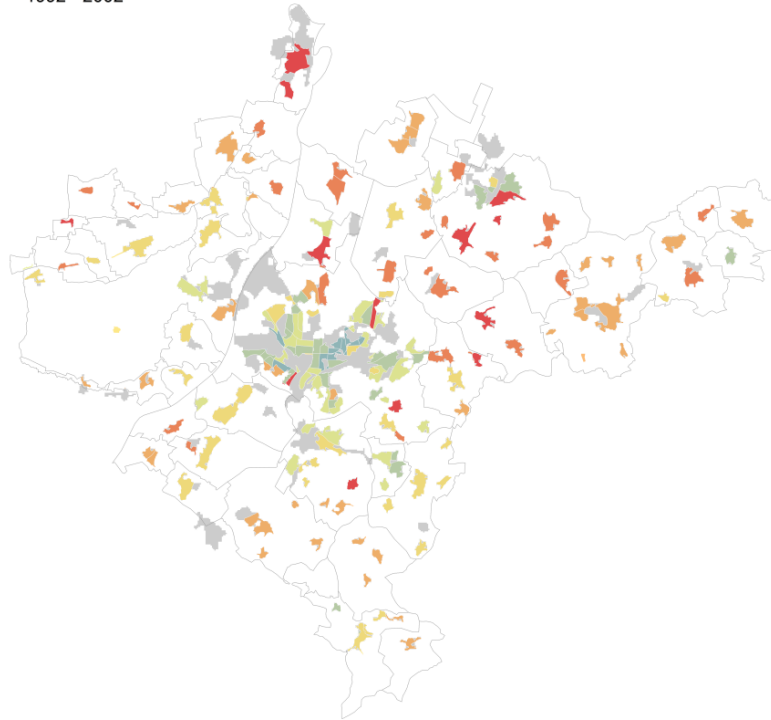
Regional Demography



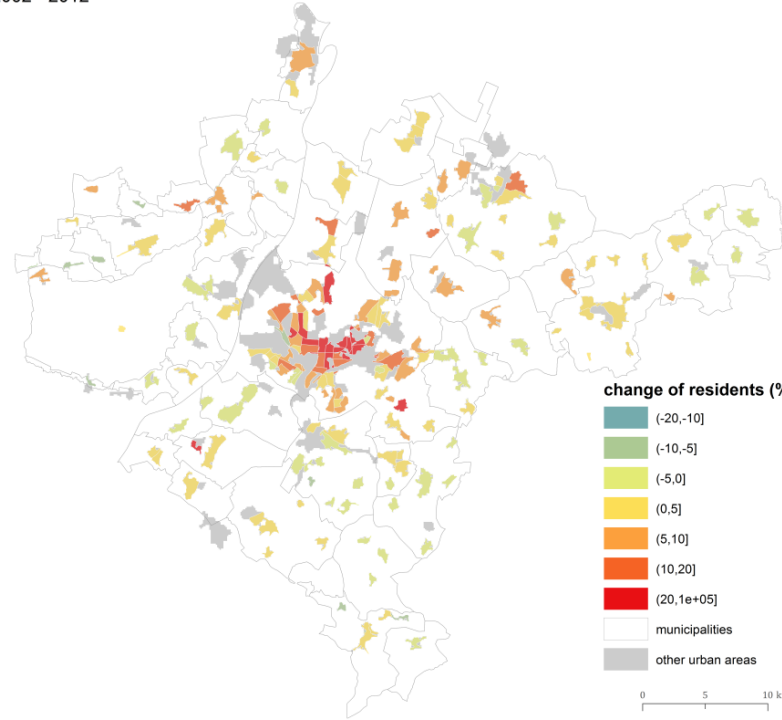
Leibniz-Institut
für ökologische
Raumentwicklung



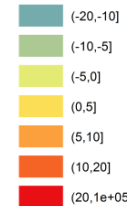
1992 - 2002



2002 - 2012



change of residents (%)



municipalities
other urban areas

0 5 10 km

Demography and land use



Leibniz-Institut
für ökologische
Raumentwicklung



de-coupling of demography
and urban development

Conclusion



Leibniz-Institut
für ökologische
Raumentwicklung



Karlsruher Institut für Technologie

- Turn towards infill development could be shown
- Land use intensification in the suburban fringe
- Relationship between demography and land uses

- Juxtaposition of institutional changes and land uses
- Applying the analytical concept of institutional change (development path)



Leibniz-Institut
für ökologische
Raumentwicklung



Thank you very much!

jehling@kit.edu
r.hecht@ioer.de